



Front Elevation

Approximately 1,860 sq.ft.

Approximately 52'-0" x 52'-6"

Optional 9'-0" ceiling

The Clearbrook

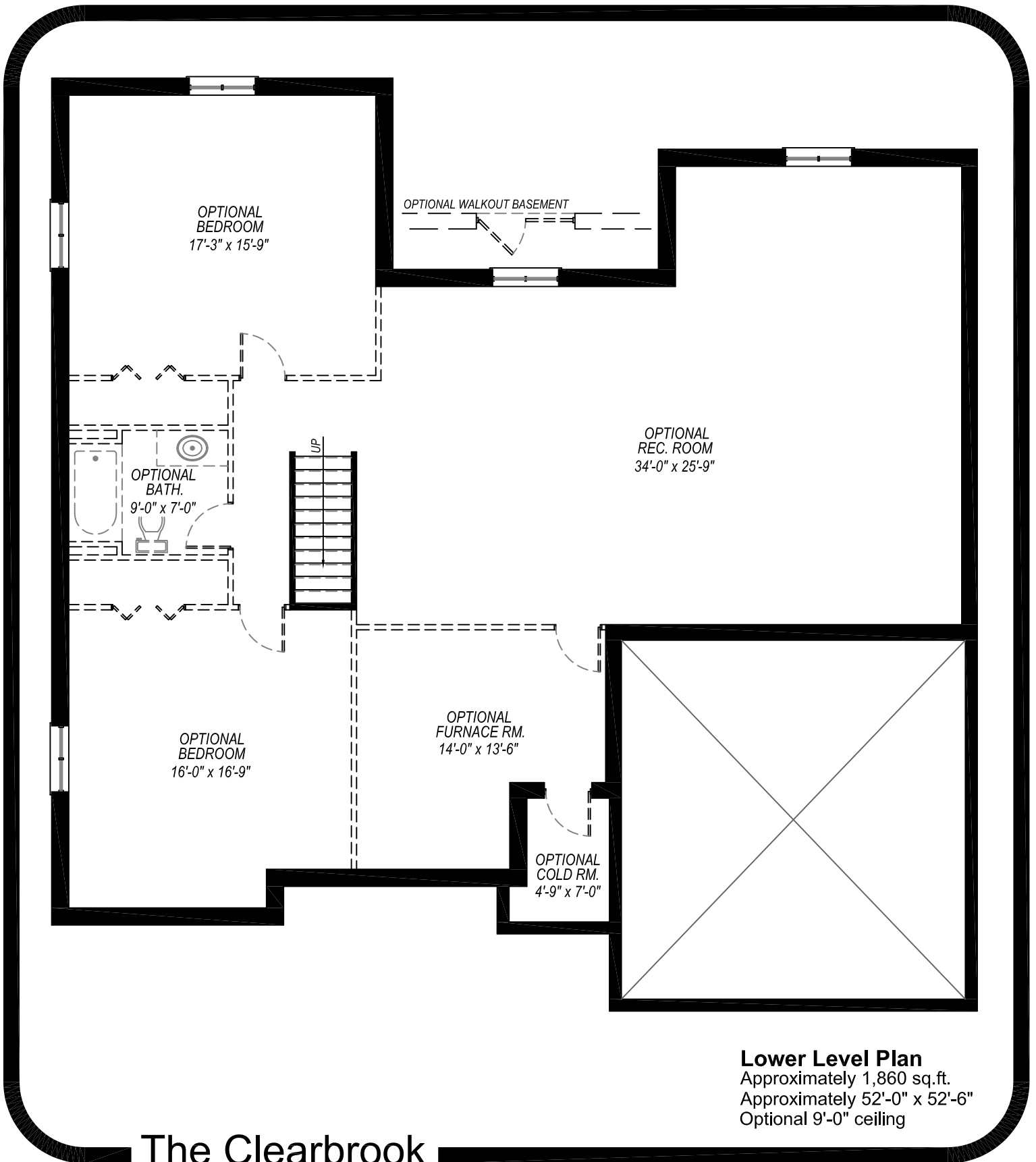
This picture is an artists representation. Please refer to a sales representative for upgraded options.

This plan and any pricing is the property of DHP Contracting. They are not to be duplicated in any way. Plans and specifications are approximate, and are subject to change without notice.

Copyright 2014



DHP
HOMES
www.dhpcontracting.com



Lower Level Plan
 Approximately 1,860 sq.ft.
 Approximately 52'-0" x 52'-6"
 Optional 9'-0" ceiling

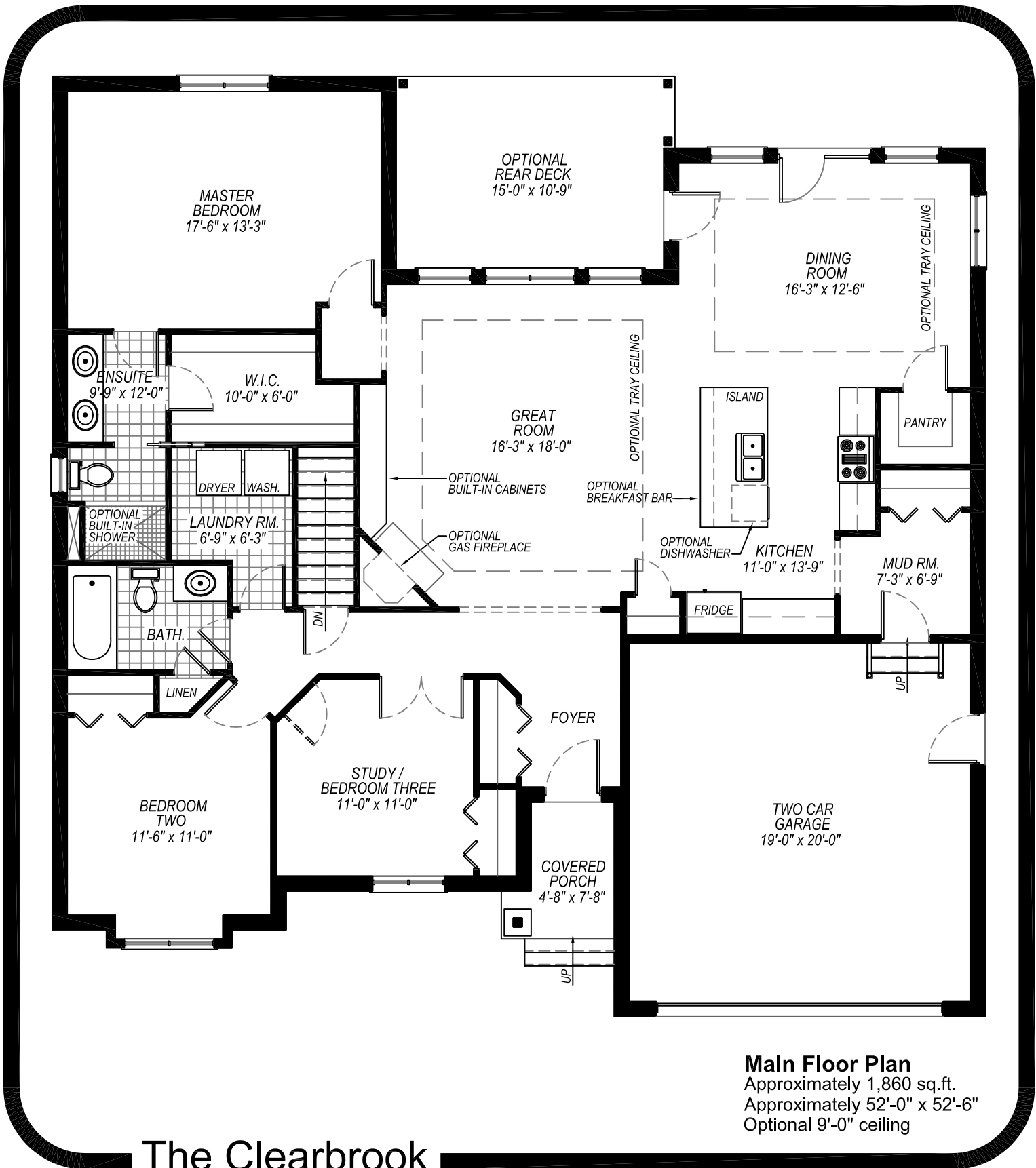
The Clearbrook

This picture is an artists representation. Please refer to a sales representative for upgraded options.

This plan and any pricing is the property of DHP Contracting. They are not to be duplicated in any way. Plans and specifications are approximate, and are subject to change without notice.

Copyright 2014

www.dhpcontracting.com



Main Floor Plan
 Approximately 1,860 sq.ft.
 Approximately 52'-0" x 52'-6"
 Optional 9'-0" ceiling

The Clearbrook

This picture is an artists representation. Please refer to a sales representative for upgraded options.

This plan and any pricing is the property of DHP Contracting. They are not to be duplicated in any way. Plans and specifications are approximate, and are subject to change without notice.

Copyright 2014

