



**Front Elevation**

Approximately 2,040 sq.ft.  
Approximately 36'-0" x 46'-0"  
Optional 9'-0" ceiling

# The Benson I

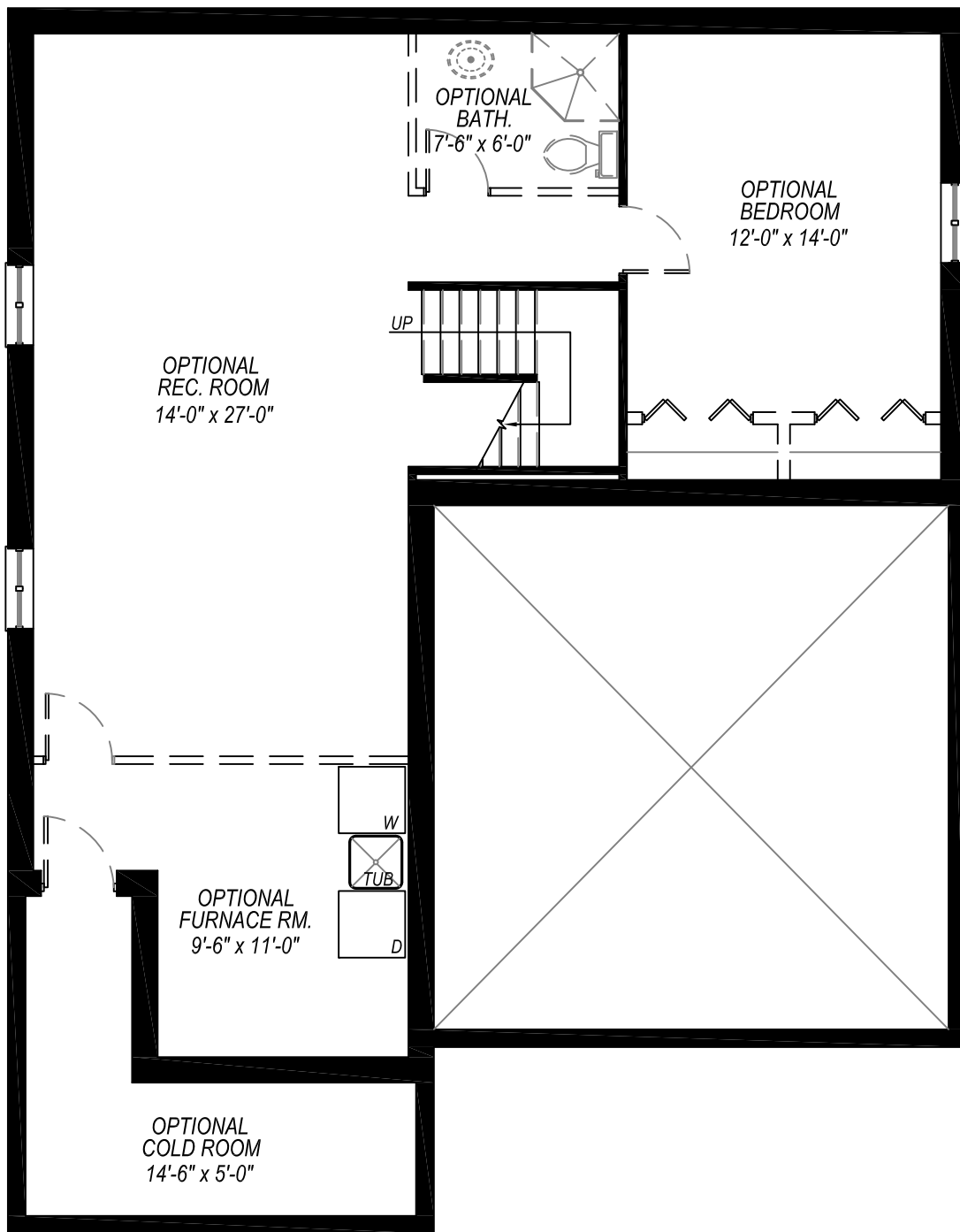
This picture is an artists representation. Please refer to a sales representative for upgraded options.

This plan and any pricing is the property of DHP Contracting. They are not to be duplicated in any way. Plans and specifications are approximate, and are subject to change without notice.

Copyright 2014



**DHP**  
HOMES  
[www.dhpcontracting.com](http://www.dhpcontracting.com)



**Lower Level Plan**  
 Approximately 2,040 sq.ft.  
 Approximately 36'-0" x 46'-0"  
 Optional 9'-0" ceiling

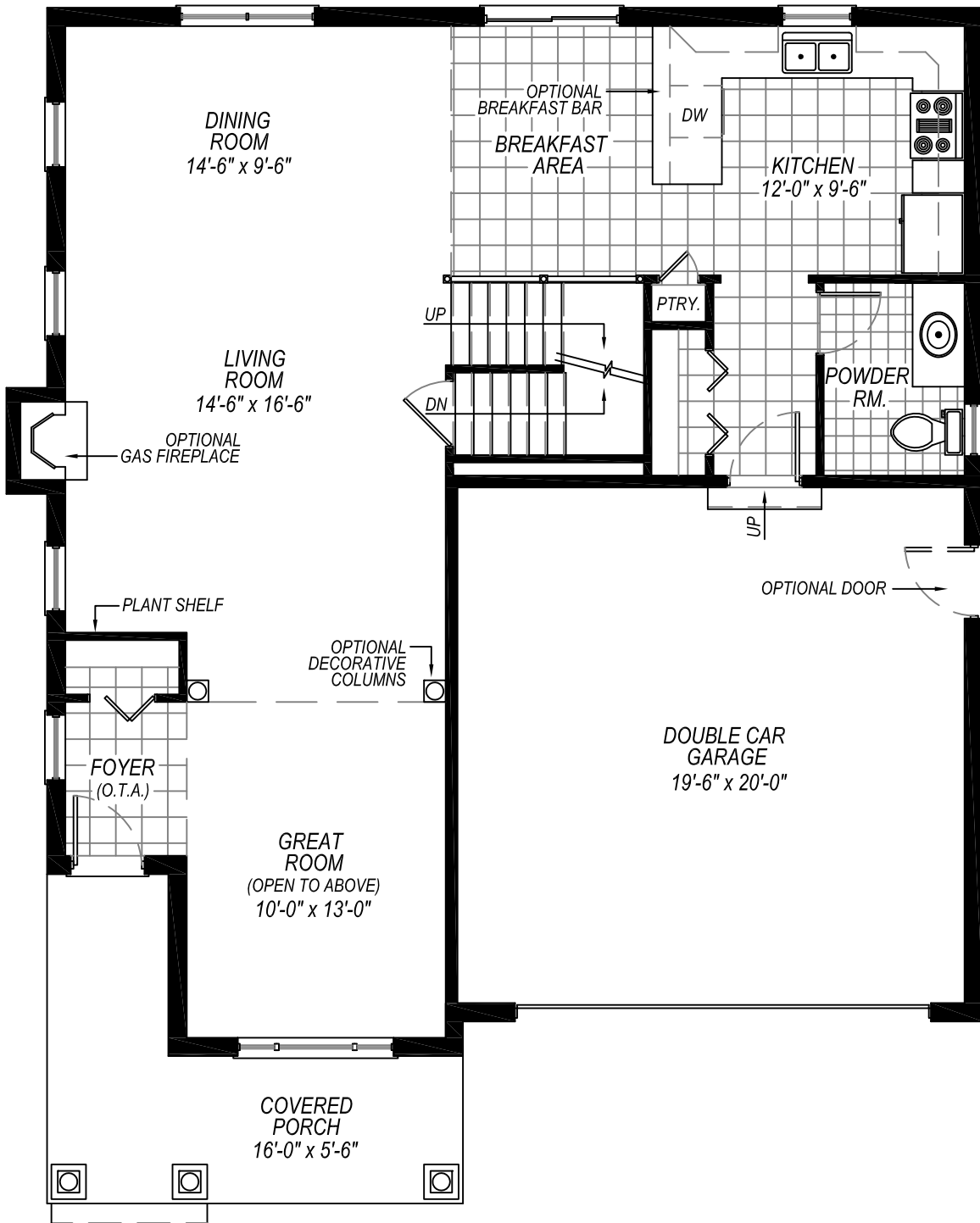
# The Benson I

This picture is an artists representation. Please refer to a sales representative for upgraded options.

This plan and any pricing is the property of DHP Contracting. They are not to be duplicated in any way. Plans and specifications are approximate, and are subject to change without notice.

Copyright 2014





**Main Floor Plan**  
 Approximately 2,040 sq.ft.  
 Approximately 36'-0" x 46'-0"  
 Optional 9'-0" ceiling

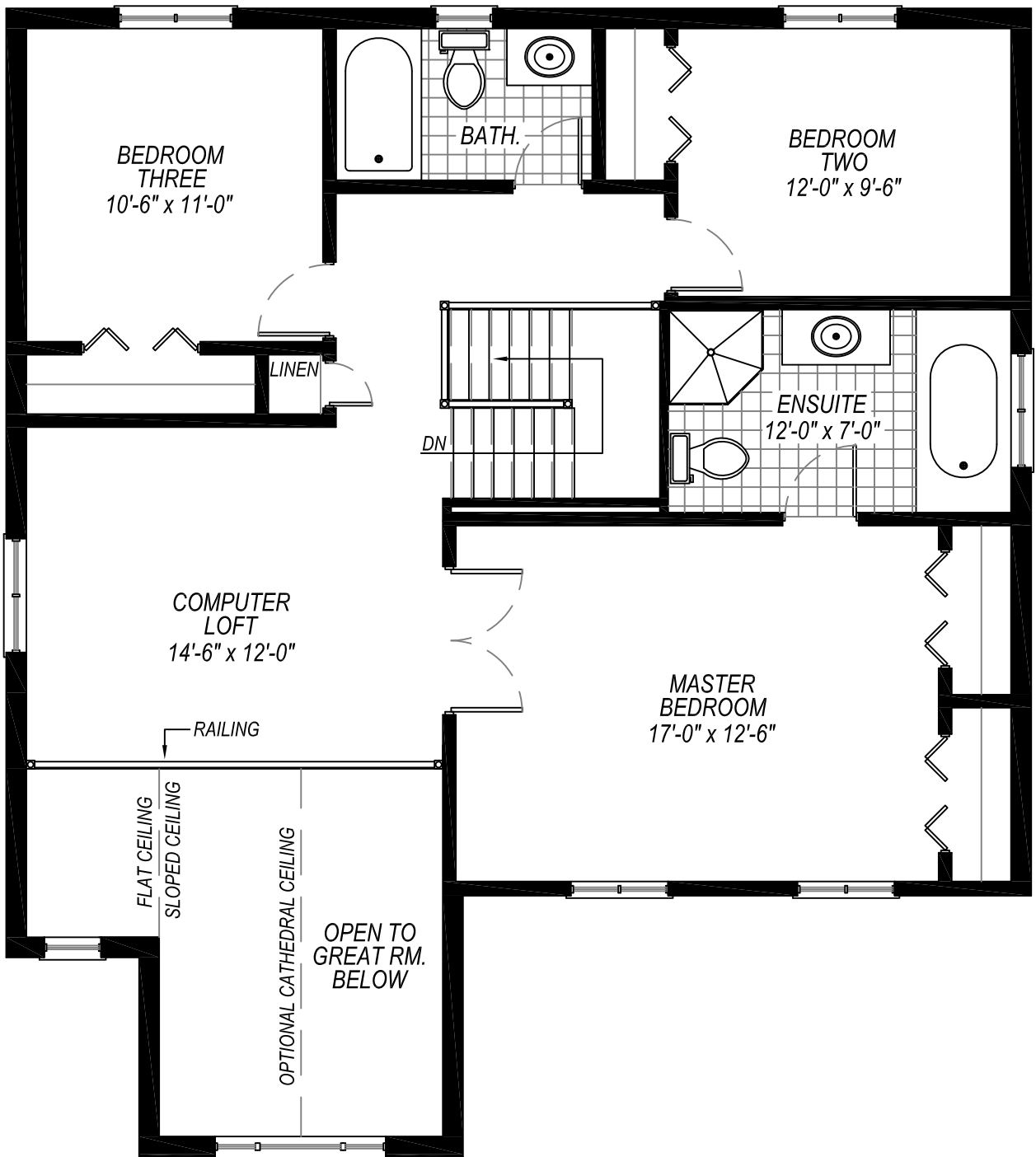
# The Benson I

This picture is an artists representation. Please refer to a sales representative for upgraded options.

This plan and any pricing is the property of DHP Contracting. They are not to be duplicated in any way. Plans and specifications are approximate, and are subject to change without notice.

Copyright 2014





**Second Floor Plan**  
 Approximately 2,040 sq.ft.  
 Approximately 36'-0" x 46'-0"  
 Optional 9'-0" ceiling

# The Benson I

This picture is an artists representation. Please refer to a sales representative for upgraded options.

This plan and any pricing is the property of DHP Contracting. They are not to be duplicated in any way. Plans and specifications are approximate, and are subject to change without notice.

Copyright 2014